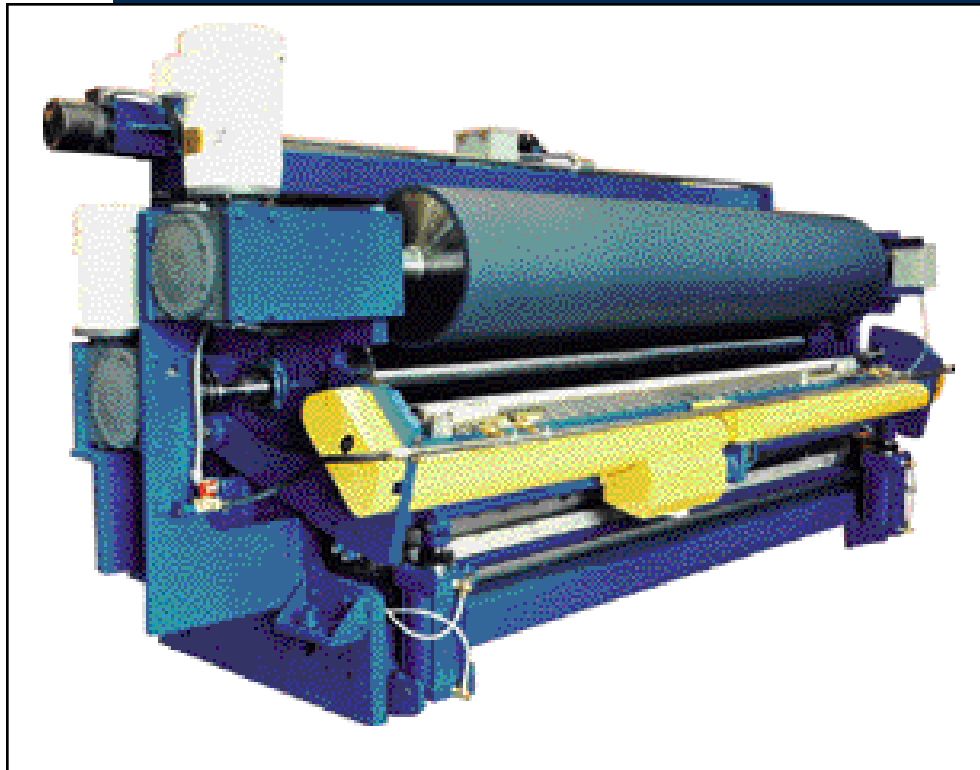


KOHLER ISO-BAR ROD COATER



The Iso-Bar Rod Coater is field proven
in more than 40 installations
worldwide.

It's superior performance makes
it the right choice for precision
coating applications on or off the
paper machine.



**KOHLER
COATING**

KOHLER ISO-BAR ROD COATERS

An isobar is a line on a weather map connecting points of equal barometric pressure. A Kohler **ISO-BAR** is a rod coater which applies equal metering pressure in a line across the entire width of

the web. This is achieved by pneumatically loading the rod against a backing roll. Coatweight is controlled by varying the rod loading pressure, eliminating web tension as a metering variable. Line speeds in excess of 3000 FPM are possible with a wide range of solids, viscosities and coatweights.

ROD HOLDER — The rod holder is the heart of the **ISO-BAR** system. The rod holder is a proprietary extruded plastic shape with a rod groove and a water circulation groove machined into it.

The **ISO-BAR** system can be run with either smooth or threaded rods. Smooth rods provide a true leveling coater that enhances gloss and surface smoothness. Threaded rods provide a contour coated surface which looks very similar to an airknife coated sheet. Changing from smooth to threaded rods can be accomplished in minutes.

BACKING ROLL — The backing roll gives the rod a resilient surface to push against to meter the coating.

APPLICATION ROLL(S) — For most coaters running at 1200 FPM and below, a single application roll is sufficient. For higher speeds or very low coatweights, a

flooded nip, or a two-roll application section can be furnished.

APPLICATION PAN — The coating pan is double-walled for cold water circulation to increase time between wash-ups.

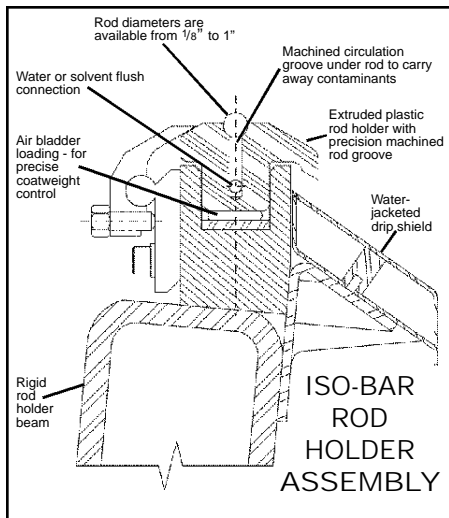
WRAP CONTROL ROLL(S) — One or two wrap control rolls are furnished, depending on whether the machine threaded straight-thru or with a return pass. Wrap on the applicator roll can be adjusted while running.

EDGE DECKLES — Adjustable edge deckles are provided to allow the web to run with dry edges regardless of width.

EDGE SPRAYS — Air atomizing water sprays are furnished to be used on the edges of the web if required. This is of particular advantage on paper machines with untrimmed edges that have a tendency to crack out or curl while passing through the dryer.

OPTIONAL WASH ROLL — An optional steel roll that runs against the backing roll with a water shower and doctor blade can be provided. This will keep the backing roll clean and cool, and is especially recommended for high speed machines which run a wide range of web widths.

THREADING ARRANGEMENTS — The machine can be designed for threading either straight-through or return-pass. The rod can contact the backing roll anywhere within the lower 90 degree quadrant of the exit side of the roll. This allows for pre-existing machine conditions. Threading rope pulleys are provided if required.



KOHLER COATING

10995 Wright Rd. • Uniontown, OH 44685 • Phone: 330/499-1407 • Fax: 330/499-6617
www.kohlercoating.com
Coater Services Inc. d.b.a.